

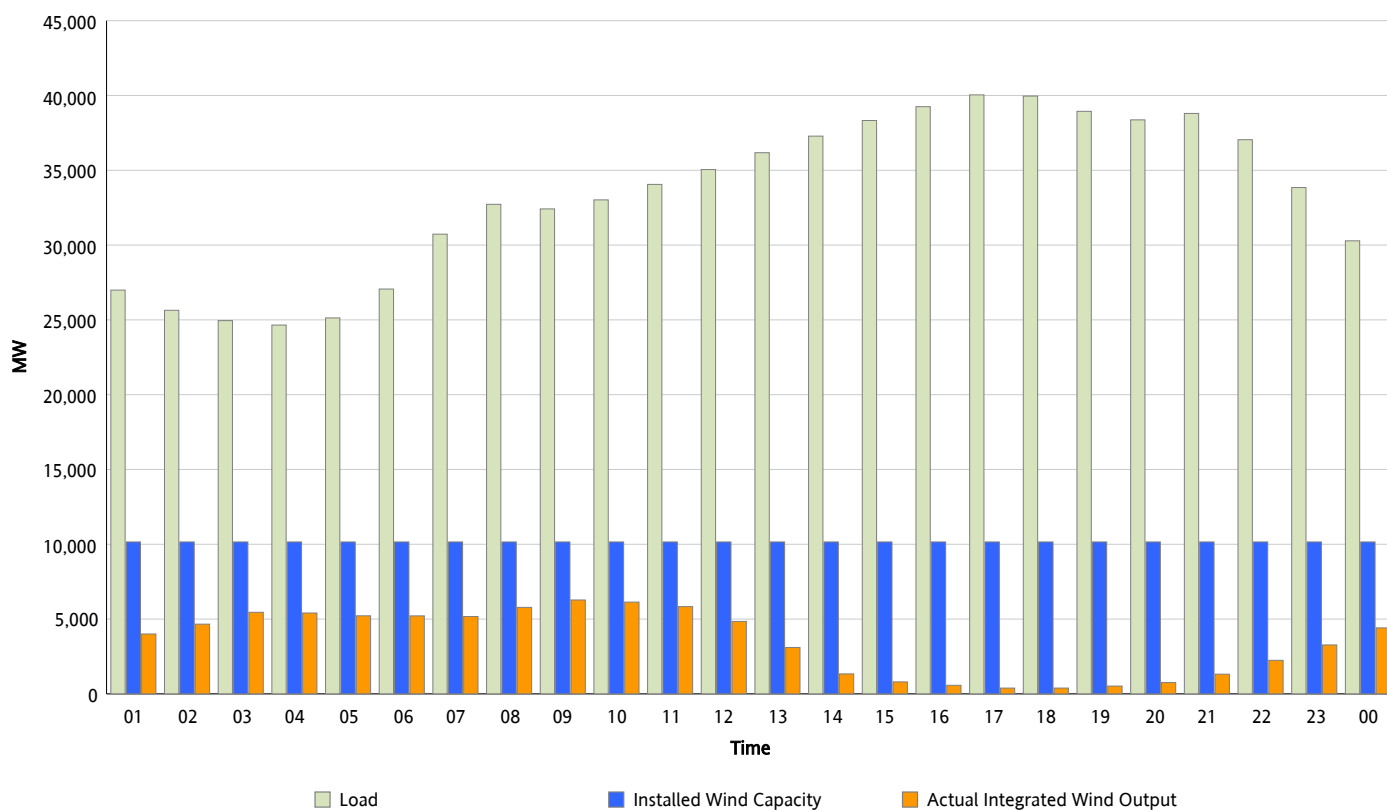


ERCOT Grid Operations

Wind Integration Report : 03/18/2013

Peak Load	40,042 MW
Load Peak Hour (HE)	17
Wind Over Peak	388 MW
Wind Record 02/09/13	9,481 MW
Max Wind Value*	6,344 MW
Wind Peak Time	08:15
Wind Integration %	19.63 %

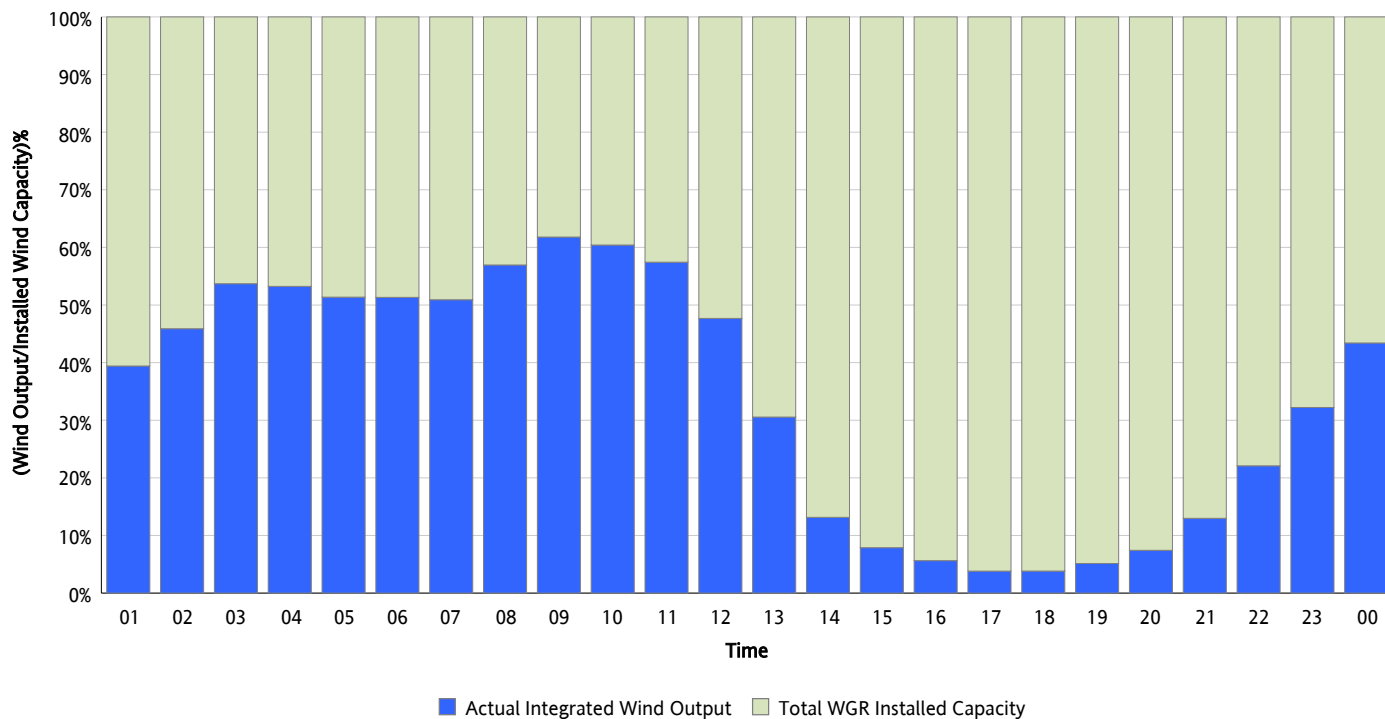
Hourly Average Actual Load vs. Actual Wind Output
03/18/2013



** Wind Record and Wind Max represent instantaneous values and the rest of the values are integrated over the hour*

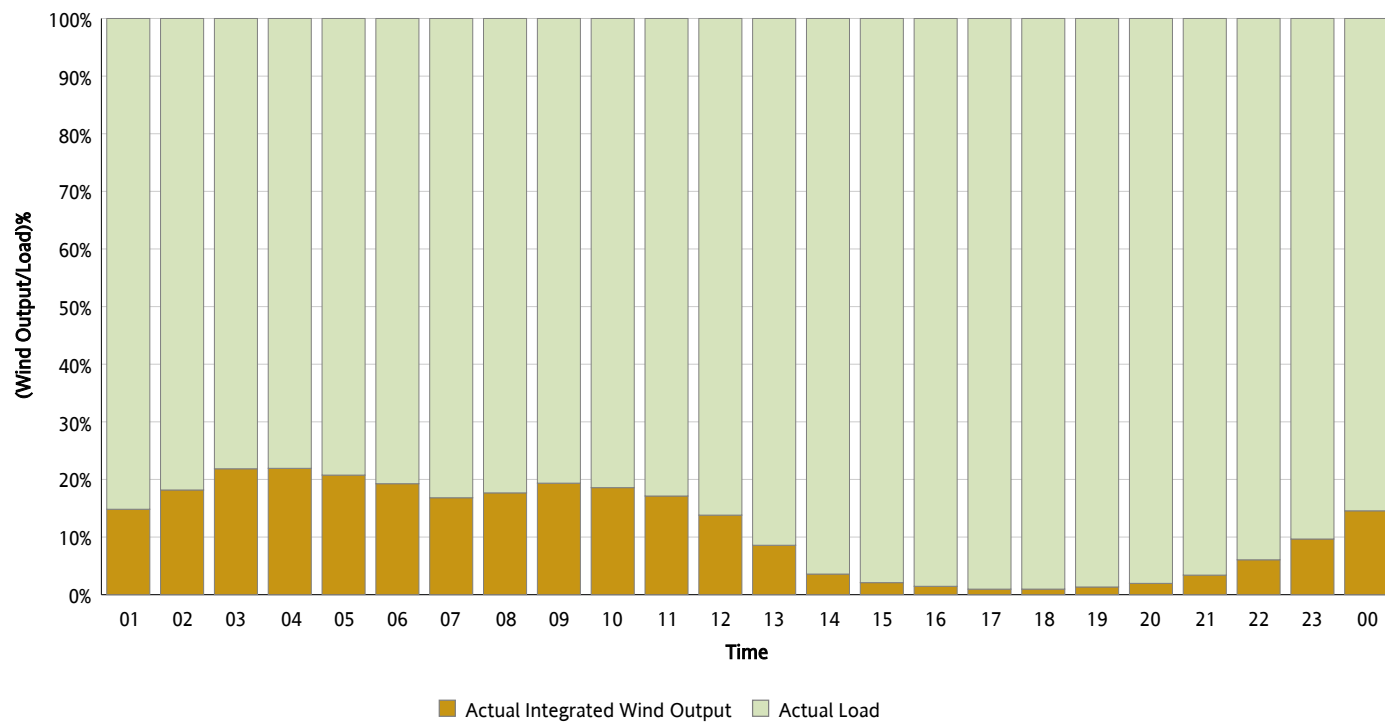
Actual Wind Output as a Percentage of the Total Installed Wind Capacity

03/18/2013



Actual Wind Output as a Percentage of the ERCOT Load

03/18/2013



ERCOT Load vs. Actual Wind Output

03/11/2013 - 03/18/2013

